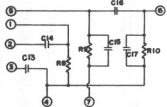


ARROW — ON VOLUME CONTROL INDICATES  
CLOCKWISE ROTATION OF SHAFT.  
ALL RESISTANCE VALUES ARE INDICATED IN OHMS  
K=1,000, MEG=1,000,000. OHMS  
CAPACITOR VALUES — — — — — C SHOWN IN MICRO  
MICRO FARADS — ( — ) — — — SHOWN IN MICRO  
FARADS EXCEPT WHERE NOTED.  
ALL DC VOLTAGES MEASURED WITH A 20,000  
OHMS PER VOLT METER NO SIGNAL SUPPLIED.



■ MULTIPLE CAPACITOR - RESISTOR CONNECTIONS.

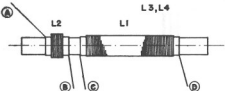
CODE NO. STAMPED ON THIS SIDE.



L5-L6  
L7-L8



L3, L4



### ALIGNMENT CHART

| Operation Steps | SIGNAL GENERATOR   |           | RECEIVER         |   |
|-----------------|--|-----------|------------------|---|
|                 | Connections to Receiver  | Frequency | Tuning Capacitor | Adjust in Stated Order for Maximum Output |
| 1               | To stator plates of gang C2 through 0.05 mf capacitor                                  | 455 Kc    | Minimum          | I. F. Transf. L7-L8-L5-L6                 |
| 2               | To Blue Lead on Antenna Rod through 200 mmf capacitor in series with a standard dummy* | 1640 Kc.  | Minimum          | Oscillator Trimmer C6                     |
| 3               | To Blue Lead on Antenna Rod through 200 mmf capacitor in series with a standard dummy* | 1500 Kc.  | Tune in 1500 Kc. | Antenna Trimmer C2                        |

\* or direct output of generator in series with a 100 µF capacitor.

